

High Vacuum Units

Hose reel for High Vacuum

Hose reel for High Vacuum characterized by:

Retractable hose

After use, the hose will return to its original position. This will save the time it would have taken to roll in the hose manual. You must help the hose during retraction.

Adjustable hose stop

The hose stop is easy to adjust and allows you to choose the optimal length for the job.

Micro switch

You activate the High vacuum unit simply by pulling the hose.

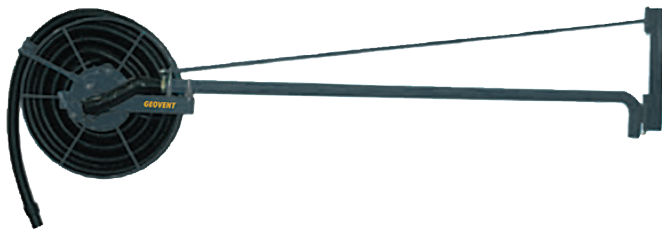
Rotatable bracket

The bracket can be rotated and increase the hose reel range.

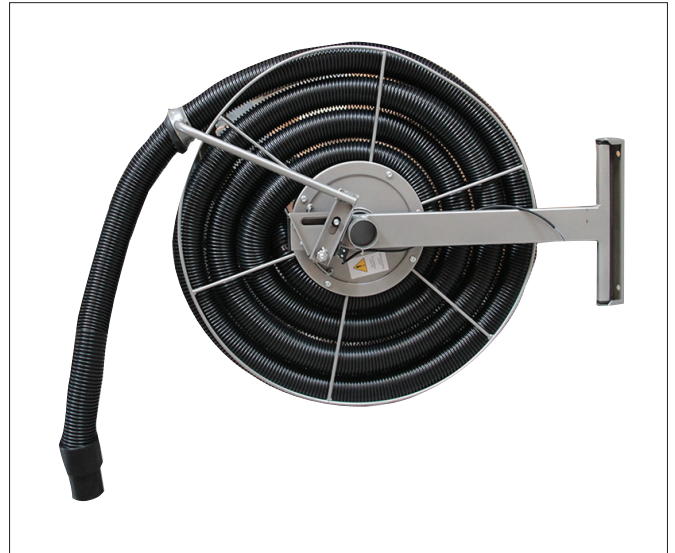
Hinge and hairpins split

Simple system for installation of the hose reel.

The variants mounted the extension arm



You can mount the Hose reel on the ceiling or the extension arm if desired. Contact us for details.



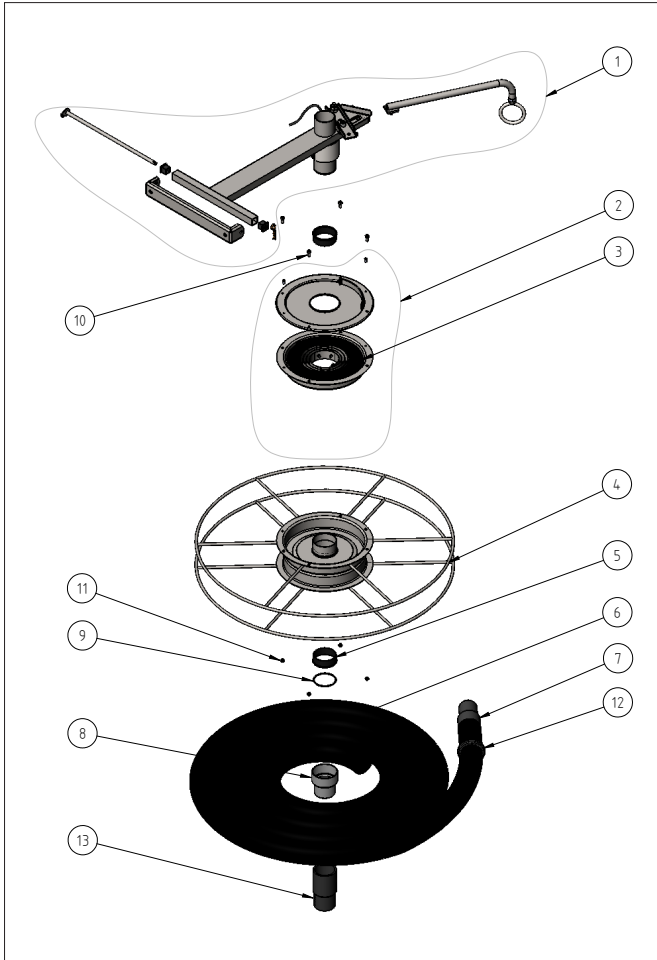
Standard Model



Ceiling-mounted variant

	Art. no.	Dimension [mm]	Weight [kg]	Brackets [mm]	Hose Ø [mm]	Hose weight [m]	Connecting to channel [mm]
Hose reels with 9m, ø38 mm hose	74-051	800x240x650	12	300x40	38	9	50
Hose reels with 7m, ø50 mm hose	74-052	850x300x700	13	300x40	50	7	50

Hose reel for High Vacuum



ITEM NO.	PART NUMBER	DESCRIPTION	QTY.
1	201410885a	ARM KIT	1
2	201410886	SPRING KIT	1
3	1803865	SPRING	0
4	201310252	HOSE SUPPORT	1
5	3001050	BUSHING 50mm	2
6	3226038	HOSE ANTISTATIC EVA 38mm	8
7	1335016	C38B HOSE END (38mm)	1
8	201620001	CONE 63-50mm	1
9	201310214	OPEN RING SW54	1
10	201620006	SCREW MC6S M5x12 FZB	4
11	201000517	SUS 304 LOCKING NUT M5	4
12	3190038	HOSE STOP	1
13	1335007	A37C HOSE CONNECTOR (38-50)	1

Dimensions

